



# ELEMENTOS DE SEGURIDAD PARA PUERTAS

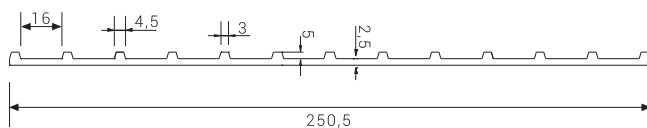
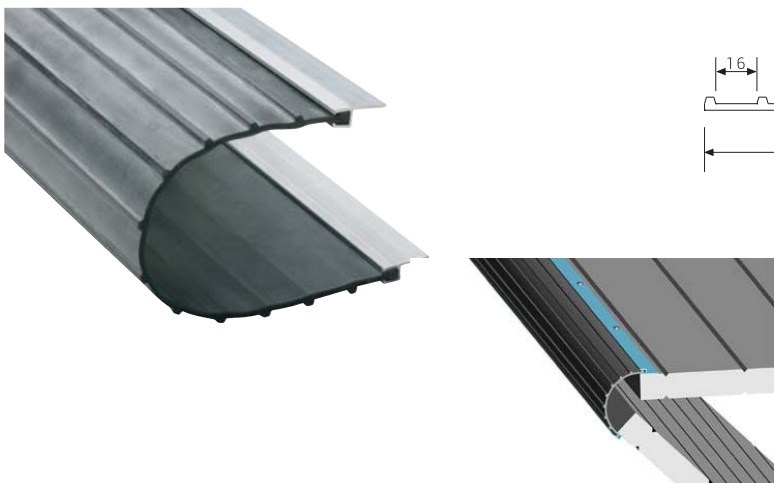
SAFETY COMPONENTS FOR DOORS  
COMPONENTS DE SÉCURITÉ POUR PORTAILS

# BANDAS, JUNTAS Y GOMAS PARAGOLPES

Rubber bumper & strip finger protection / Caoutchouc de protection & pare-chocs

## BANDA GOMA ANTIPINZAMIENTO

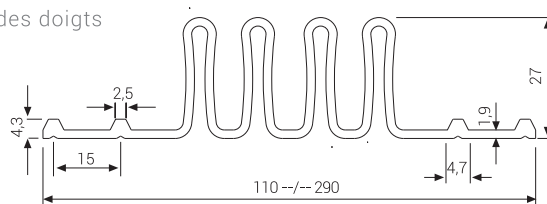
Rubber strip finger protection / Bande en caoutchouc pour la protection des doigts



Ref.	Mt.	Mt.	PVP Mt.
<b>800200</b>	20 Mts.	0,876	11,7566€

## BANDA GOMA ANTIPINZAMIENTO TIPO "FUELLE"

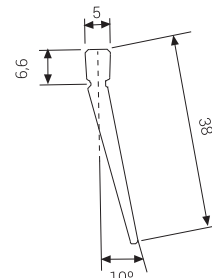
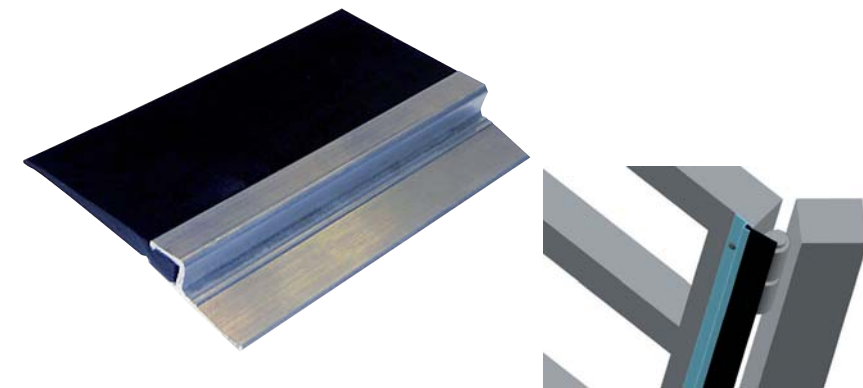
Rubber strip finger protection / Bande en caoutchouc pour la protection des doigts



Ref.	Mt.	Mt.	PVP Mt.
<b>800220</b>	20 Mts.	0,773	9,3844€

## BANDA GOMA TAPAJUNTAS

Rubber joint cover / Joints caoutchouc pour portes



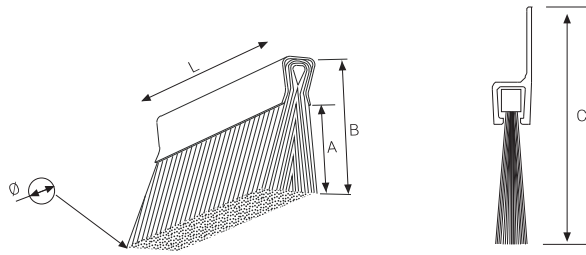
Ref.	Mt.	Mt.	PVP Mt.
<b>800700</b>	100 Mts.	0,152	2,8584€

# BANDAS, JUNTAS Y GOMAS PARAGOLPES

Rubber bumper & strip finger protection / Caoutchouc de protection & pare-chocs

## CEPILLO

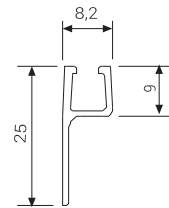
Brush / Brosse



Ref.	Material	Ø	A	B	C	L			PVP
99957800	Nylon	0,15	25	30	50	3000	50	0,422	10,8174€
99957810	Polypropylene	0.20	45	50	70	3000	50	0,562	9,1135€
99957820	Polypropylene	0.30	62	67	87	3000	50	0,844	10,7975€
99958000	Cartón	-	-	-	-	3000	1	4,180	11,0892€

## PERFIL ALUMINIO "h"

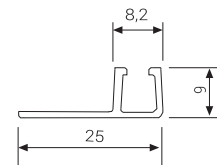
Aluminum profile "h" / Profil en aluminium "h"



Ref.	L			PVP
99957900	3.000	100	0,364	6,6242€

## PERFIL ALUMINIO "F"

Aluminum profile "F" / Profil en aluminium "F"



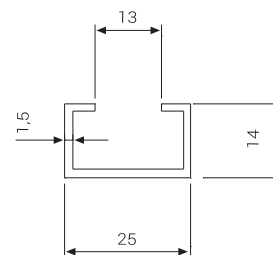
Ref.	L			PVP
99957910	3.000	100	0,361	9,9255€

# BANDAS, JUNTAS Y GOMAS PARAGOLPES

Rubber bumper & strip finger protection / Caoutchouc de protection & pare-chocs

## PERFIL ALUMINIO DE 25x14

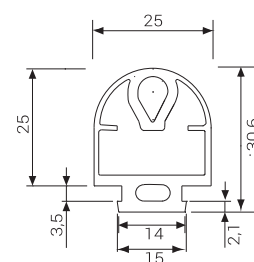
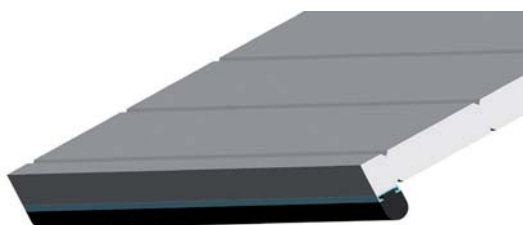
Aluminum profile 25x14 / Profil en aluminium 25x14



Ref.	L			PVP
99958900	2.000	100	0,427	7,6837€

## GOMA 25x25 PARAGOLPES BASCULANTE

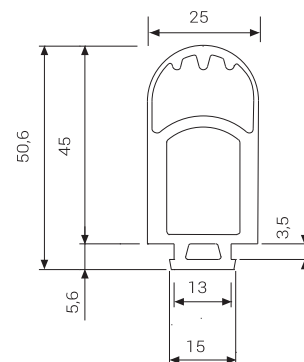
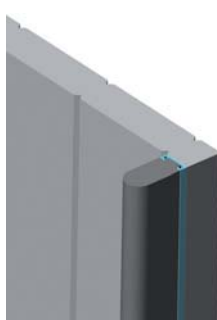
Rubber bumper 25x25 / Caoutchouc pare-chocs 25x25



Ref.			Mt.	PVP Mt.
800300	20 Mts.	0,338		5,1599€

## GOMA 25x40 PARAGOLPES BATIENTE

Rubber bumper 25x40 / Caoutchouc pare-chocs 25x40



Ref.			Mt.	PVP Mt.
800600	25 Mttts.	0,666		48,7673€

# BANDAS, JUNTAS Y GOMAS PARAGOLPES

Rubber bumper & strip finger protection / Caoutchouc de protection & pare-chocs

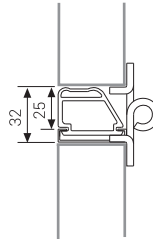
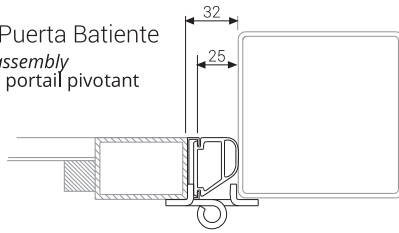
## GOMA TAPA SEPARACIÓN ENTRE TUBOS

Caoutchouc couvre separation entre tubes / Seal rubber



Ref.	L			PVP
<b>800900</b>	6000	1	2,990	46,0404€

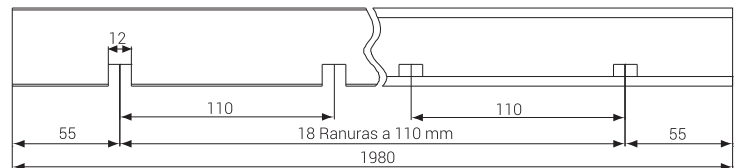
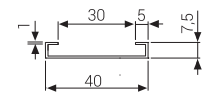
Montaje Puerta Batiente  
Swing door assembly  
Assemblage portail pivotant



Montaje Puerta Basculante  
Assembling over garage door  
Montage des portes basculantes

## PERFIL ACERO SOPORTE GOMA SEPARACIÓN TUBOS

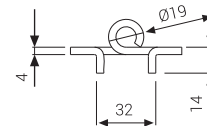
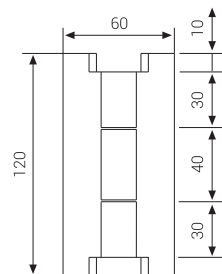
Steel profile / Profile en acier



Ref.	L			PVP
<b>99959900</b>	1980	10	0,865	5,6874€

## BISAGRA CON ALAS SEPARADORAS

Tilting door flat hinge to be welded with separating wings  
Charnière universel de portail à souder avec des ailes d'écartement



Ref.			PVP
<b>200121000</b>	12	0,361	2,3571€

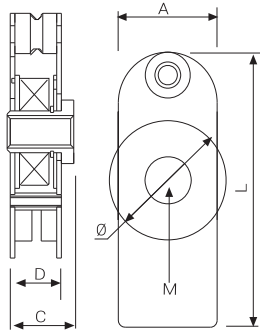
# DISPOSITIVOS ANTICAÍDAS

Parachutes anti door drop / Parachute pour portails

## DISPOSITIVO ANTICAÍDAS

Parachute to prevent door drop

Parachutes pour portails basculants



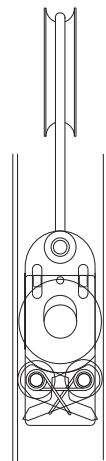
Acabado / Finish / Finition / ZINC

Ref.	Para guía	Ø	A	L	M	C	D			PVP
607401201	40 X 2	35	28	96	M-12	29	22	10	0,252	22,3080€
607411201	40 X 2,5	32	28	96	M-12	29	22	10	0,242	27,6210€
607501401	50 X 3	42	37	108	M-14	23	28	10	0,374	13,7623€
607601401	60 X 3	62	44	120	M-14	27,5	32,5	15	0,603	17,2029€
607831601	80 X 3	72	54	150	M-16	32,5	37,5	8	1,260	28,0463€
607841601	80 X 4	70	54	150	M-16	32,5	37,5	8	1,210	28,0463€
607101601	100 X 4	90	54	177	M-16	36,5	41,5	4	1,690	38,6100€
607611401	UPN 60	44-46	37	108	M-14	23	28	10	0,384	29,7450€
607811601	UPN 80	60-62	54	150	M-16	32,5	37,5	8	1,080	24,6573€
607111601	UPN 100	80-82	54	163	M-16	32,5	37,5	4	1,380	45,5400€

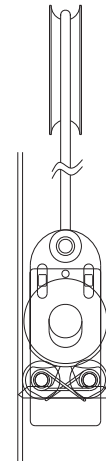
## ESTADOS DISPOSITIVO, EN TRABAJO - ACTIVADO

Device status, work & enabled situation

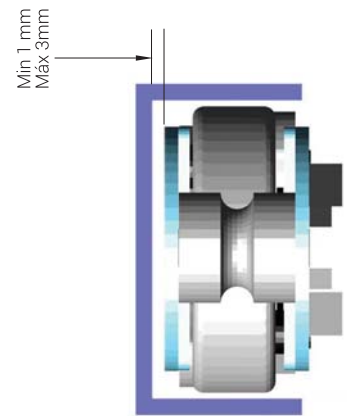
État de l'appareil, au travail ou activé



**En posición de trabajo**  
Work position  
Position de travail



**Mecanismo activado**  
Enabled device  
Appareil activé



**Guía lateral en Acero**  
Steel guide  
Guide d'acier

## DISPOSITIVOS ANTICAÍDAS Y SU APLICACIÓN EN LAS GUÍAS

Fall protection devices and their guides combination

Dispositifs d'arrêt et leur combinaison avec les guides

