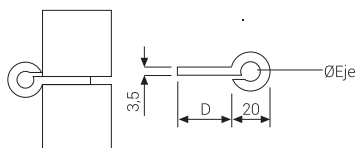
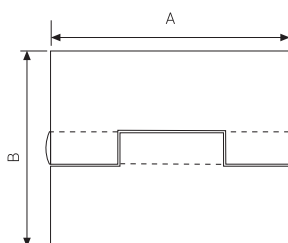


## BISAGRA LIBRILLO

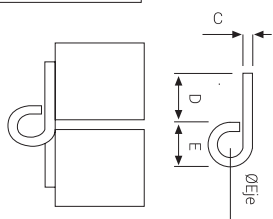
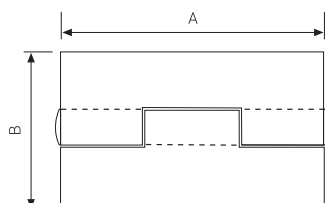
Tilting door hinge to be welded / Paumelle de portail à souder



| Ref.             | Medidas AxB | D     | Acabado Finish/Finition | Ø Eje |    |       | PVP     |
|------------------|-------------|-------|-------------------------|-------|----|-------|---------|
| <b>200151000</b> | 150 x 100   | 40    | Gris                    | 12    | 25 | 0,675 | 5,5482€ |
| <b>200151200</b> | 150 x 120   | 50    | Gris                    | 12    | 20 | 0,754 | 5,7341€ |
| <b>200151400</b> | 150 x 140   | 60    | Gris                    | 12    | 15 | 0,835 | 5,9819€ |
| <b>200151600</b> | 150 x 160   | 50/80 | Gris                    | 12    | 15 | 0,882 | 6,3044€ |
| <b>200151001</b> | 150 x 100   | 40    | Zinc                    | 12    | 25 | 0,675 | 6,2893€ |
| <b>200151201</b> | 150 x 120   | 50    | Zinc                    | 12    | 20 | 0,754 | 6,6432€ |
| <b>200151401</b> | 150 x 140   | 60    | Zinc                    | 12    | 15 | 0,835 | 7,2657€ |
| <b>200151601</b> | 150 x 160   | 50/80 | Zinc                    | 12    | 15 | 0,882 | 7,2105€ |
| <b>200151002</b> | 150 x 100   | 40    | Bichrome                | 12    | 25 | 0,675 | 6,2984€ |
| <b>200151202</b> | 150 x 120   | 50    | Bichrome                | 12    | 20 | 0,754 | 6,6408€ |
| <b>200151402</b> | 150 x 140   | 60    | Bichrome                | 12    | 15 | 0,835 | 7,2431€ |
| <b>200151602</b> | 150 x 160   | 50/80 | Bichrome                | 12    | 15 | 0,882 | 7,1896€ |

## BISAGRA LIBRILLO SOBREPONER

Tilting door flat hinge to be welded / Charnière universal de portail à souder



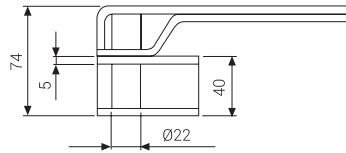
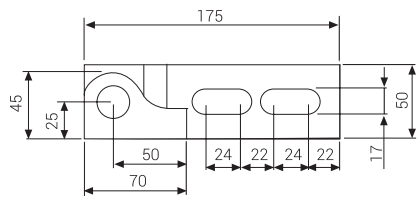
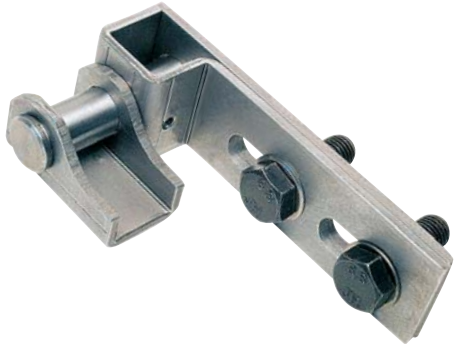
| Ref.             | Medidas AxB | C | D  | E  | Acabado Finish/Finition | Ø Eje |    |       | PVP     |
|------------------|-------------|---|----|----|-------------------------|-------|----|-------|---------|
| <b>200086000</b> | 80 x 50     | 3 | 17 | 16 | Gris                    | 10    | 30 | 0,194 | 1,1251€ |
| <b>200106000</b> | 100 x 60    | 4 | 21 | 18 | Gris                    | 10    | 30 | 0,337 | 1,6702€ |
| <b>200156000</b> | 150 x 60    | 4 | 21 | 18 | Gris                    | 10    | 12 | 0,503 | 2,7302€ |
| <b>200086001</b> | 80 x 50     | 3 | 17 | 16 | Zinc                    | 10    | 30 | 0,194 | 1,3116€ |
| <b>200106001</b> | 100 x 60    | 4 | 21 | 18 | Zinc                    | 10    | 30 | 0,337 | 1,8945€ |
| <b>200156001</b> | 150 x 60    | 4 | 21 | 18 | Zinc                    | 10    | 12 | 0,503 | 3,1700€ |

# PUNTOS DE GIRO SUPERIORES

TOP TURN POINTS / PIVOT SUPÉRIEUR

## PUNTO DE GIRO SUPERIOR CON SOPORTE

Upper turning point for gates / Pivot supérieur de portail



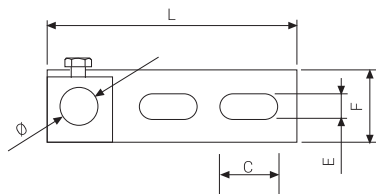
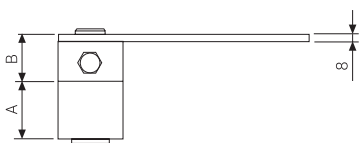
| Ref              | Acabado<br>Finish/Finition |    |       | PVP      |
|------------------|----------------------------|----|-------|----------|
| <b>232164000</b> | Gris                       | 12 | 1,050 | 14,7754€ |

## PUNTO DE GIRO SUPERIOR CON SOPORTE

Upper turning point for gates / Pivot supérieur de portail



| Ref.             | A  | B  | C  | Ø  | E  | F  | L   | Acabado<br>Finish/Finition |    |       | PVP      |
|------------------|----|----|----|----|----|----|-----|----------------------------|----|-------|----------|
| <b>233163500</b> | 35 | 33 | 30 | 22 | 13 | 40 | 155 | Zinc                       | 12 | 0,935 | 10,0230€ |
| <b>233164000</b> | 40 | 36 | 40 | 26 | 16 | 50 | 175 | Zinc                       | 12 | 1,340 | 12,9308€ |



# PUNTOS DE GIRO SUPERIORES

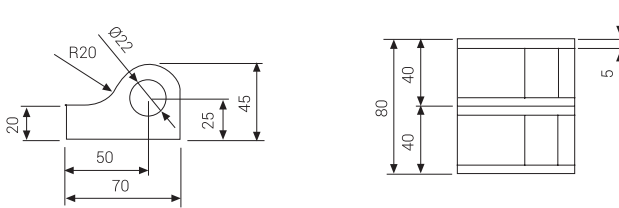
TOP TURN POINTS / PIVOT SUPÉRIEUR

## PUNTO DE GIRO SUPERIOR SIN SOPORTE

Upper turning point for gates / Pivot supérieur de portail



| Ref.             | Acabado<br>Finish/Finition |    |       | PVP      |
|------------------|----------------------------|----|-------|----------|
| <b>232404000</b> | Gris                       | 20 | 0,698 | 10,5828€ |



## PUNTO DE GIRO SUPERIOR SIN SOPORTE

Upper turning point for gates / Pivot supérieur de portail



| Ref.             | A  | B  | C  | Ø  | Acabado<br>Finish/Finition |    |       | PVP     |
|------------------|----|----|----|----|----------------------------|----|-------|---------|
| <b>233353500</b> | 35 | 35 | 77 | 22 | Zinc                       | 12 | 0,683 | 7,4340€ |
| <b>233404000</b> | 40 | 40 | 87 | 26 | Zinc                       | 12 | 1,008 | 8,2599€ |

