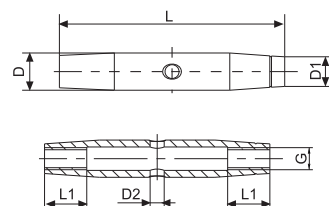


# TENSORES, VARILLAS Y TERMINALES EN INOX AISI 316

Turnbuckles, rods and terminals for wire rope / Tendeurs, rond plein, terminaux pour câble

## CUERPO TENSOR

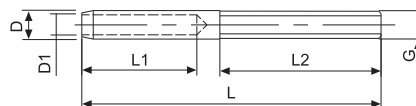
Turnbuckle body / Corps de ridoir droite/gauche



Ref.	L	L1	D	D1	D2	G	PVP
<b>701120667</b>	65	12,5	10	7,8	3	M6	2,0075€
<b>701120867</b>	80	15	13,5	10,4	5	M8	3,8115€

## TENSOR CON ROSCA EXTERIOR

Threaded terminal / Tendeur filéte extérieur



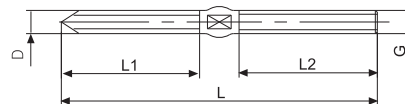
Ref. Dcha. Right / Droite	Cable	L	L1	L2	D	D1	G	PVP
<b>718060467</b>	4	65	25	30	6,3	4,4	M6	1,4025€
<b>718060567</b>	5	73	30	30	7,5	5,3	M6	1,8865€
<b>718080667</b>	6	88	40	35	9	6,5	M8	2,7005€

Ref. Izq. Left / Gauche	Cable	L	L1	L2	D	D1	G	PVP
<b>719060467</b>	4	65	25	30	6,5	4,4	M6	1,4025€
<b>719060567</b>	5	73	30	30	7,5	5,3	M6	1,8865€
<b>719080667</b>	6	88	40	35	9	6,5	M8	2,7005€

## TORNILLO ANCLAJE / TENSOR

Threaded lag screw / Vis filéte métrique



Ref. Dcha. Right / Droite	L	L1	L2	D	G	PVP
<b>741060467</b>	80	35	35	6	M6	0,9955€
<b>741080667</b>	90	40	40	8	M8	1,6555€

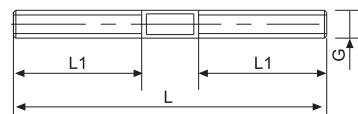
Ref. Izq. Left / Gauche	L	L1	L2	D	G	PVP
<b>742060467</b>	80	35	35	6	M6	0,9955€
<b>742080667</b>	90	40	40	8	M8	1,6555€

# TENSORES, VARILLAS Y TERMINALES EN INOX AISI 316

Turnbuckles, rods and terminals for wire rope / Tendeurs, rond plein, terminaux pour câble

## VARILLA DOBLE ROSCA DCHA./IZQ.

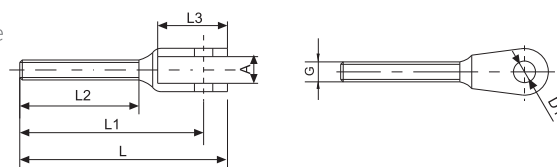
Double threaded rod / Boulon de serrage droite/gauche



Ref.	L	L1	G	PVP
<b>739270667</b>	66	27	M6	0,7800€
<b>739300867</b>	75	30	M8	1,3650€

## TERMINAL HORQUILLA ROSCA EXTERIOR

Threaded for terminal thread / Terminal fourche chape filetée extérieure



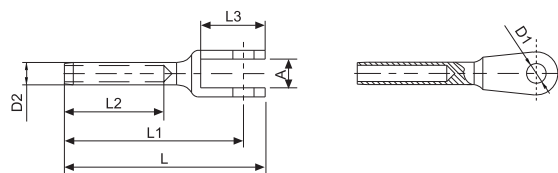
Ref. Dcha. Right / Droite	L	L1	L2	L3	D1	A	G	PVP
<b>732060467</b>	61	54	35	20,5	6,5	8	M6	2,2000€
<b>732080667</b>	73,5	65	40	23,5	8,5	11	M8	5,1438€

Ref. Izq. Left / Gauche	L	L1	L2	L3	D1	A	G	PVP
<b>733060467</b>	61	54	35	20,5	6,5	8	M6	2,2000€
<b>733080667</b>	73,5	65	40	23,5	8,5	11	M8	5,3680€

## TERMINAL HORQUILLA AGUJERO INTERNO

Fork terminal / Terminal fourche chape



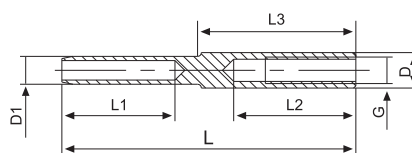
Ref.	Cable	L	L1	L2	L3	D1	D2	A	PVP
<b>736050467</b>	4	56	50	25	18	5,5	6,3	8	2,1945€
<b>736060567</b>	5	65,5	58	30	20,5	6,5	7,5	8	2,7885€
<b>736080667</b>	6	80,5	72	40	23,5	8,5	9	11	4,4880€

# TENSORES, VARILLAS Y TERMINALES EN INOX AISI 316

Turnbuckles, rods and terminals for wire rope / Tendeurs, rond plein, terminaux pour câble

## TENSOR ROSCA INTERNA

Internal thread terminal / Tendeur taraudé filet interne

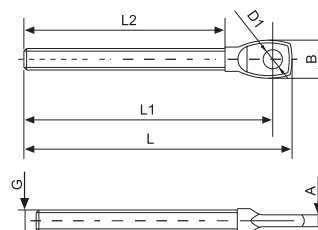


Ref. Dcha. Right / Droite	Cable	L	L1	L2	L3	D	D1	G	PVP
<b>714060467</b>	4	65	25	27	35	8	6,3	M6	1,8755€
<b>714060567</b>	5	70	30	27	30	8	7,5	M6	2,0460€
<b>714080667</b>	6	85	40	32	40	11	9	M8	3,8280€

Ref. Izq. Left / Gouche	Cable	L	L1	L2	L3	D	D1	G	PVP
<b>715060467</b>	4	65	25	27	35	8	6,3	M6	1,8755€
<b>715060567</b>	5	70	30	27	30	8	7,5	M6	2,0460€
<b>715080667</b>	6	85	40	32	40	11	9	M8	3,8258€

## TERMINAL CENTRADO

Threaded eye / Vis à œillet

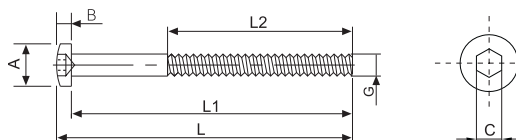


Ref. Dcha. Right / Droite	L	L1	L2	D1	A	B	G	PVP
<b>744050667</b>	73	67,8	54,8	6,3	3,8	11	M6	1,6720€
<b>744080867</b>	85	78	61	8,3	4,5	15	M8	2,5685€

Ref. Izq. Left / Gouche	L	L1	L2	D1	A	B	G	PVP
<b>745050667</b>	73	67,8	54,8	6,3	3,8	11	M6	1,6687€
<b>745080867</b>	85	78	61	8,3	4,5	15	M8	2,5685€

## TERMINAL CON ROSCA

Screw terminal / Terminal filetage métrique tête goutte d'eau



Ref. Dcha. Right / Droite	L	L1	L2	A	B	C	G	PVP
<b>764800667</b>	80	76	50	11,5	4	5	M6	1,4740€
<b>764800867</b>	90	86	50	11,5	4	5	M8	2,2770€

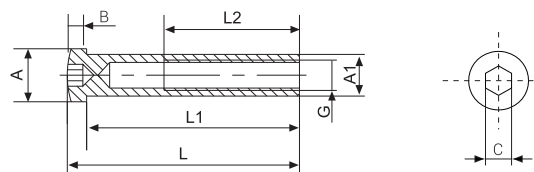
Ref. Izda. Left / Gouche	L	L1	L2	A	B	C	G	PVP
<b>765800667</b>	80	76	50	11,5	4	5	M6	1,4740€
<b>765800867</b>	90	86	50	11,5	4	5	M8	2,2770€

# TENSORES, VARILLAS Y TERMINALES EN INOX AISI 316

Turnbuckles, rods and terminals for wire rope / Tendeurs, rond plein, terminaux pour câble

## TERMINAL CABEZA REDONDA VARILLA ROSCA INTERNA

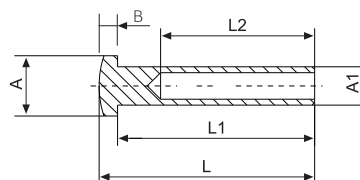
Dome head internal thread terminal / Douille tête fraisée taraudée



Ref.	L	L1	L2	A	A1	B	C	G	PVP
<b>717060467</b>	49	45	30	11,5	8	4	5	M6	1,9305€
<b>717080667</b>	60	55	35	14	11	5	6	M8	3,3770€

## TERMINAL CABEZA REDONDA AGUJERO INTERNO

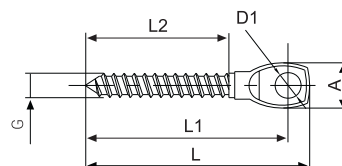
Dome head terminal / Terminal tête goutte d'eau



Ref.	Cable	L	L1	L2	A	A1	B	PVP
<b>710000467</b>	4	35	32	25	10	6,3	3	0,9955€
<b>710000567</b>	5	41	37	30	11,5	7,5	4	1,3970€
<b>710000667</b>	6	52	47	40	14	9	5	1,9525€

## TERMINAL CENTRADO ANCLAJE/TENSOR

Screw eye / Vis à oeillet ancrage/tendeur



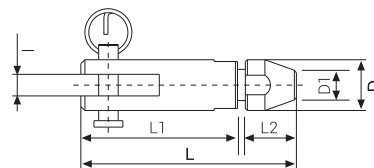
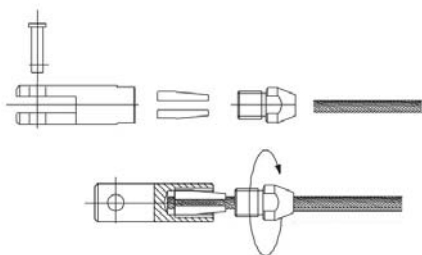
Ref.	L	L1	L2	D1	A	G	PVP
<b>746050667</b>	54,6	49,4	35	6,3	11	M6	1,6720€
<b>746080867</b>	65,4	58,4	40	8,3	15	M8	2,1615€

# TENSORES, VARILLAS Y TERMINALES EN INOX AISI 316

Turnbuckles, rods and terminals for wire rope / Tendeurs, rond plein, terminaux pour câble

## TERMINAL APRIETE RÁPIDO CON HORQUILLA

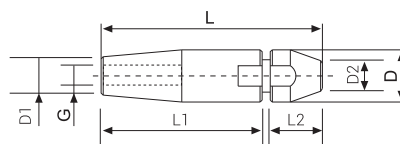
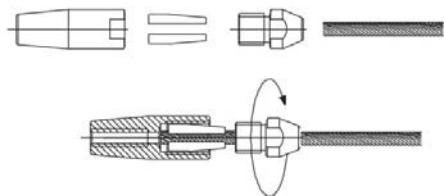
Fork swageless terminal / Embout à visser avec chape



Ref.	Cable	L	L1	L2	D	D1	I	PVP
<b>784080467</b>	4	53	40	13	13	7,6	5,5	7,1830€
<b>784100567</b>	5	55	42	13	15	9	6,5	10,2135€
<b>784120667</b>	6	57	44	13	17	11	7	16,2250€

## TERMINAL APRIETE RÁPIDO ROSCA INTERNA

Internal thread swageless terminal / Embout à visser sertissage manuel



Ref. Dcha.	Cable	L	L1	L2	D	D1	D2	G	PVP
<b>780140667</b>	4	53	40	13	13	9,6	7,6	M6	7,5680€
<b>780150667</b>	5	55	42	13	15	11,5	9	M6	10,5545€
<b>780160867</b>	6	57	44	13	17	13,5	11	M8	15,3450€

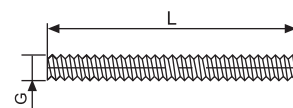
Ref. Izda.	Cable	L	L1	L2	D	D1	D2	G	PVP
<b>781140667</b>	4	53	40	13	13	9,6	7,6	M6	7,5680€
<b>781150667</b>	5	55	42	13	15	11,5	9	M6	10,5545€
<b>781160867</b>	6	57	44	13	17	13,5	11	M8	15,3439€

# TENSORES, VARILLAS Y TERMINALES EN INOX AISI 316

Turnbuckles, rods and terminals for wire rope / Tendeurs, rond plein, terminaux pour câble

## VARILLA ROSCADA

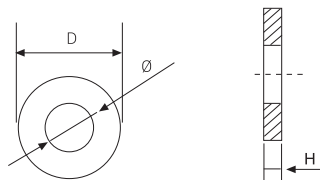
Threaded rod / Tige filetée



Ref.	L	G	PVP
700611067	110	M6	1,2965€
700811067	110	M8	2,2259€
700613067	130	M6	1,3116€
700813067	130	M8	2,4538€
700615067	150	M6	1,8409€
700815067	150	M8	3,0630€

## ARANDELA

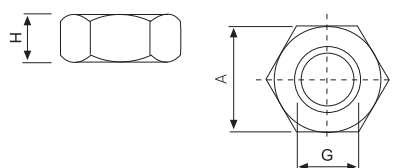
Washer / Rondelle



Ref. Dcha.	Ø	D	H	PVP
706060467	6,4	12	1,6	0,0736€
706080667	8,4	16	1,6	0,1315€

## TUERCA

Nut / Écrou six pans

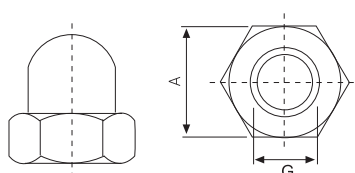


Ref. Dcha.	A	H	G	PVP
704120667	10	5	M6	0,4572€
704120867	13	6	M8	0,0648€

Ref. lzda.	A	H	G	PVP
705120667	10	5	M6	0,2340€
705120867	13	6	M8	0,3060€

## TUERCA CIEGA

Blind nut / Écrou borgne



Ref.	A	G	PVP
704060467	10	M6	0,1332€
704080667	13	M8	0,3420€

# CABLES EN INOX AISI 316

Stainless wire rope / Câbles en inox

## CABLES INOX 7X7+0

Stainless steel wire rope 7x7+0 / Câbles inox 7x7+0

Cable con calidad del acero AISI 316. El bajo grosor del alambre lo hace más vulnerable frente a otras composiciones con alambres más gruesos frente a duras condiciones climáticas.

Cable with raw material quality AISI 316 steel. The low thickness of the wire makes it more vulnerable to other compositions with wires thicker in front of harsh weather conditions.

Câble produit acier AISI 316. La faible épaisseur du fil le rend plus vulnérable aux autres compositions avec des fils plus épais devant de conditions météorologiques difficiles.

Ref.	Ø Cable Ø Cable Ø Câble	Ø Bobina Ø Coil Ø Bobine	PVP
320025407	4 mm	25 m	29,2500€
320100407	4 mm	100 m	113,1000€
320025507	5 mm	25 m	42,9000€
320100507	5 mm	100 m	159,9000€
320025607	6 mm	25 m	56,5500€
320100607	6 mm	100 m	210,6000€



## PRENSADO CON BOMBA HIDRÁULICA MANUAL

Hydraulic crimping tool / Tenaille hydraulique manuelle

Sistema industrial y robusto para prensar los terminales con sus respectivos cables. Comprende Cabezal con 3 matrices en dotación para prensar cables de 4, 5 y hasta 6 mm.

Industrial and strong system to press terminals with their respective cables. Comprises Head with 3 matrix to press cables 4, 5 and max.6 mm.

Système industriel et robuste pour le sertissage des bornes du câble. Compris la tête avec 3 outillages de sertissage pour câbles 4, 5 et max.6 mm.

Ref.			PVP
700000367	1	14	1.134€



¡ATENCIÓN! Nunca usar la tenaza sin matrices  
WARNING! Never use the pliers with dies  
ATTENTION! Jamais utiliser les tenailles sans matrices