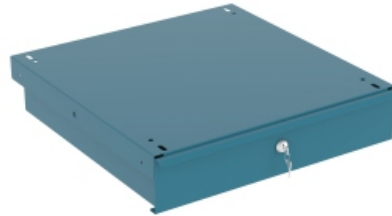


SERIE 129 - 132 - 133

Para bancos de trabajo 112 / 150 / 152.  
Pour établis 112 / 150 / 152.  
For 112 / 150 / 152 workbenches.



SERIE 129



SERIE 132

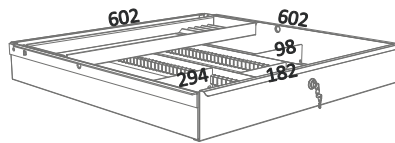
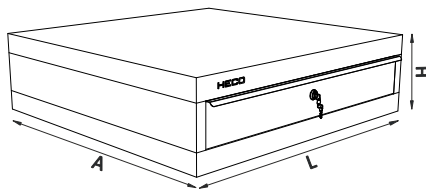


SERIE 133



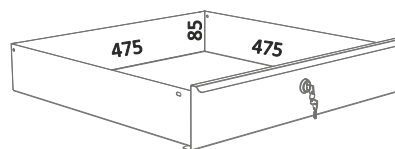
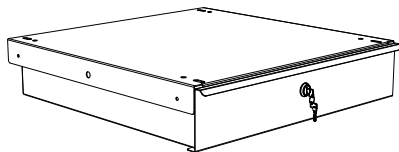
Especificar tipo de encimera.  
Spécifier type du plan de travail.  
Specify type of worktop.

SERIE 129 STANDARD



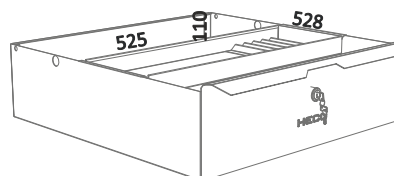
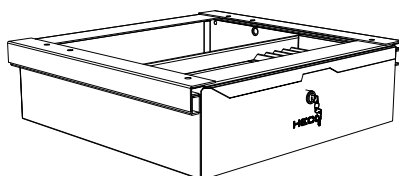
		L x A x H
129	34,9 Kg	714x707x300
	L x A x H (mm)	VOL (m³)
1	725x770x325	0,181

SERIE 132 STANDARD



		L x A x H
132	9 Kg	500x500x105
	L x A x H (mm)	VOL (m³)
1	530x530x135	0,038

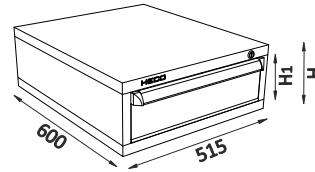
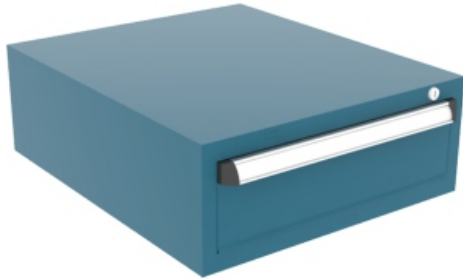
SERIE 133 STANDARD



		L x A x H
133	8 Kg	570x528x160
	L x A x H (mm)	VOL (m³)
1	600x590x180	0,064

## SERIE 153

Para bancos de trabajo 112 / 150 / 152.  
 Pour 112 / 150 / 152.  
 For 112 / 150 / 152 workbenches.



	H1 (mm)	H (mm)
153 1 100	100	200
153 1 200	200	300
153 2	200	300
153 3	300	400
153 4	400	500

**e** 1 mm estructura structure / structure

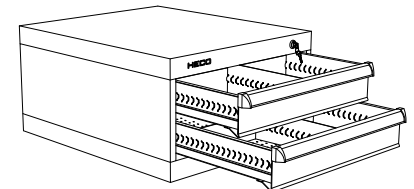
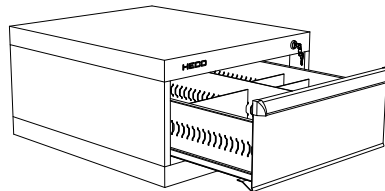
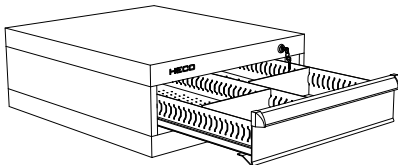
**e** 1,5 mm cajón tiroir / drawer

**i** Especificar tipo de encimera.  
 Spécifier type du plan de travail.  
 Specify type of worktop.

## SERIE 153 STANDARD



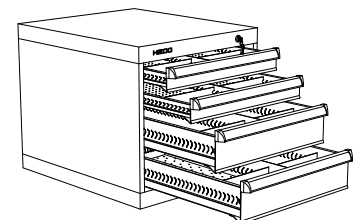
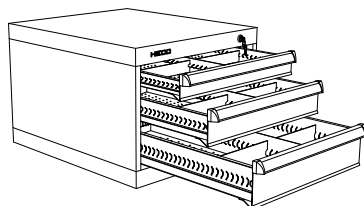
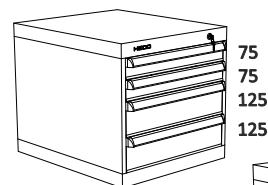
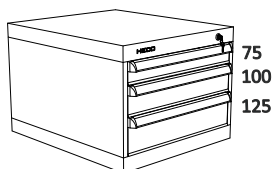
Por cajón.  
 Pour tiroir.  
 For drawer.



L x A x H		
153 1 100	18 Kg	515x600x200
	L x A x H (mm)	VOL (m³)
1	530x650x210	0,070

L x A x H		
153 1 200	21 Kg	515x600x300
	L x A x H (mm)	VOL (m³)
1	530x650x310	0,103

L x A x H		
153 2	24 Kg	515x600x300
	L x A x H (mm)	VOL (m³)
1	530x650x310	0,103

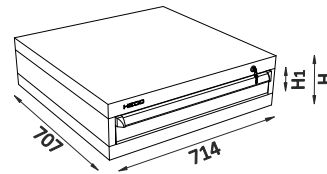
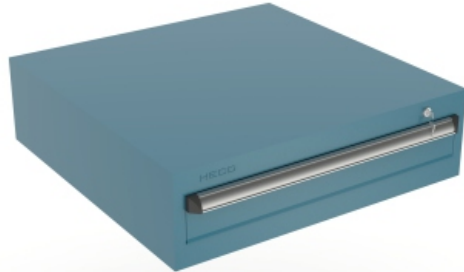


L x A x H		
153 3	37,5 Kg	515x600x400
	L x A x H (mm)	VOL (m³)
1	530x650x410	0,136

L x A x H		
153 4	43 Kg	515x600x500
	L x A x H (mm)	VOL (m³)
1	530x650x510	0,228

SERIE 113

Para bancos de trabajo 112 / 150 / 152.  
Pour établis 112 / 150 / 152.  
For 112 / 150 / 152 workbenches.



100

	H1 (mm)	H (mm)
113 1 100	100	200
113 1 200	200	300
113 2	200	300
113 3	300	400
113 4	400	500

**e** 1 mm estructura structure / structure

**e** 1,5 mm cajón tiroir / drawer



Especificar tipo de encimera.  
Spécifier type du plan de travail.  
Specify type of worktop.

SERIE 113 STANDARD



Por cajón.  
Pour tiroir.  
For drawer.

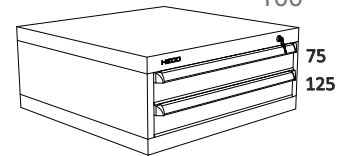
100



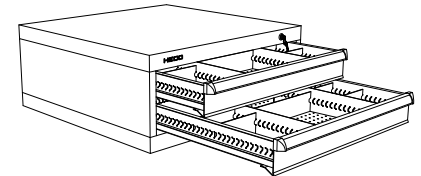
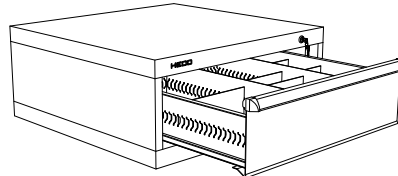
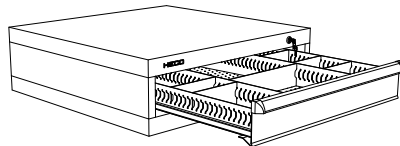
100



200



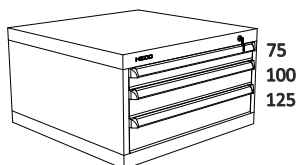
75  
125



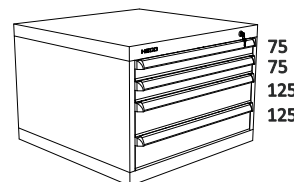
L x A x H		
113 1 100	28 Kg	714x707x200
	L x A x H (mm)	VOL (m³)
1	730x755x125	0,122

L x A x H		
113 1 200	29 Kg	714x707x300
	L x A x H (mm)	VOL (m³)
1	730x735x325	0,174

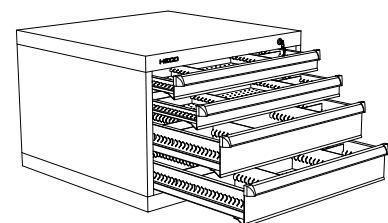
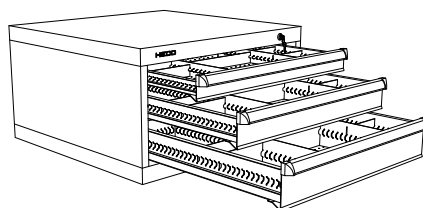
L x A x H		
113 2	37 Kg	714x707x300
	L x A x H (mm)	VOL (m³)
1	740x735x325	0,174



75  
100  
125



75  
75  
125  
125



L x A x H		
113 3	60 Kg	714x707x400
	L x A x H (mm)	VOL (m³)
1	740x735x425	0,231

L x A x H		
113 4	76 Kg	714x707x500
	L x A x H (mm)	VOL (m³)
1	740x735x525	0,285